

Stephen Loyd, MD



Addiction: Trauma at the Core

cedarrecovery.com

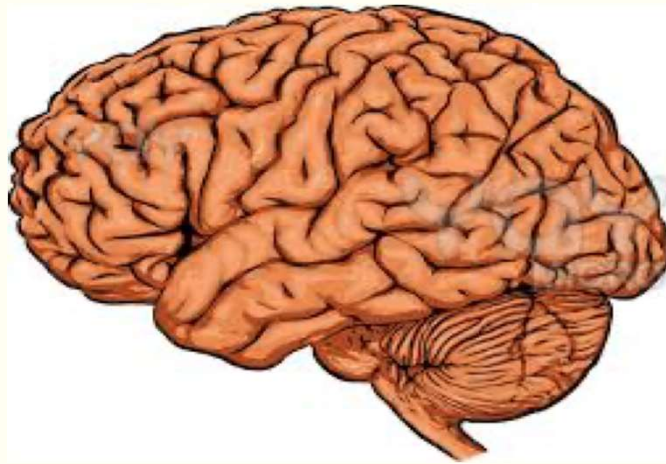
1

Slot Machine



cedarrecovery.com

2



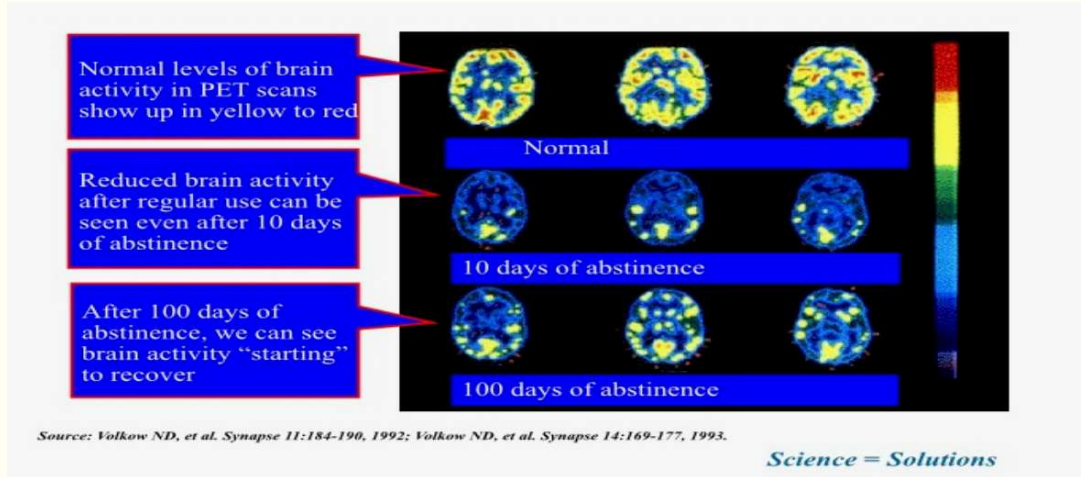
3

Question 1

- Which one of the following are not a risk factor for addiction?
 - A. Family History
 - B. Trauma (physical, sexual, emotional abuse)
 - C. Addictive Personality
 - D. Socially Acceptable Opportunity

4

Brain Healing Takes Time



cedarrecovery.com

5

Felitti



cedarrecovery.com

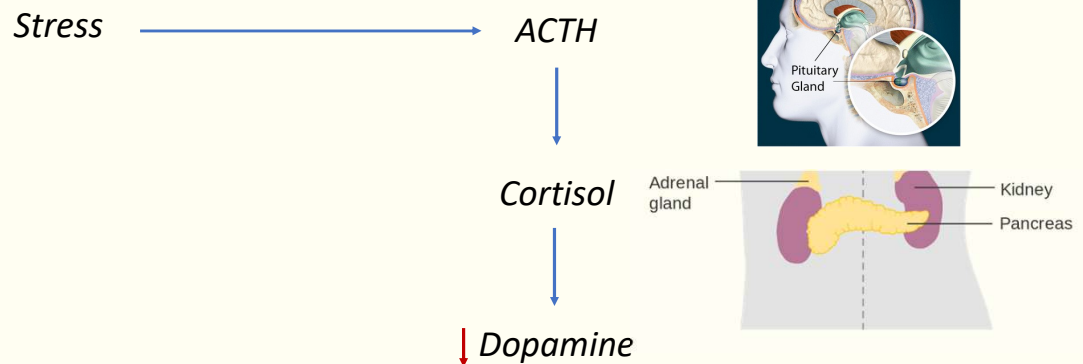
6

Question 2

- Which of the following is the "Hallmark" of addiction?
 - A. Continued use despite consequences
 - B. Tolerance
 - C. Getting Dopesick
 - D. Hitting "Rock Bottom"

7

Effect of Chronic Stress (Trauma)



8

Porter and Jick Letter

To the Editor: Recently we examined our current files to determine the incidence of narcotic addiction in 39,946 hospitalized medical patients who were monitored consecutively. Although there were 11,882 patients who received at least one narcotic preparation, there were only four cases of reasonably well-documented addiction in patients who had no history or addiction. The addiction was considered major in only one instance. The drugs implicated were meperidine in two patients, Percodan in one, and hydromorphone in one. We conclude that despite widespread use of narcotic drugs in hospitals, the development of addiction is rare in medical patients with no history of addiction.

Jane Porter

Hershel Jick, M.D.

Boston Collaborative Drug Surveillance Program

Boston University Medical Center

Waltham, MA 02154



cedarrecovery.com

9

Question 3

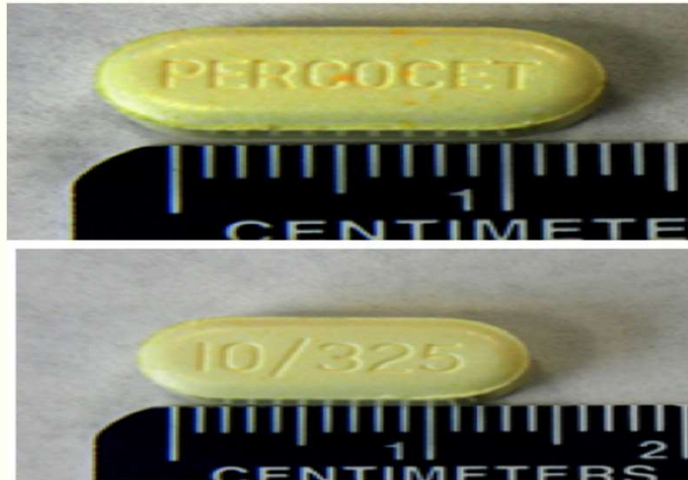
- Regarding addiction, which one of the following statements concerning trauma is true?
 - A. Trauma is only a risk if it occurs in childhood.
 - B. Physical, sexual, and emotional abuse can be hard to uncover at the initial evaluation.
 - C. Most childhood trauma resolves when people learn to "pull themselves up by their own bootstraps".
 - D. Modern medications make the need for trauma therapy less necessary.



cedarrecovery.com

10

Counterfeit Pills



11

Question 4

- Which of the following is the most effective treatment for trauma?
 - A. Yoga
 - B. Benzodiazepines,
 - C. Selective Serotonin Reuptake Inhibitors (SSRI),
 - D. Eye Movement Desensitization and Reprocessing (EMDR).

12

What it's all about



cedarrecovery.com